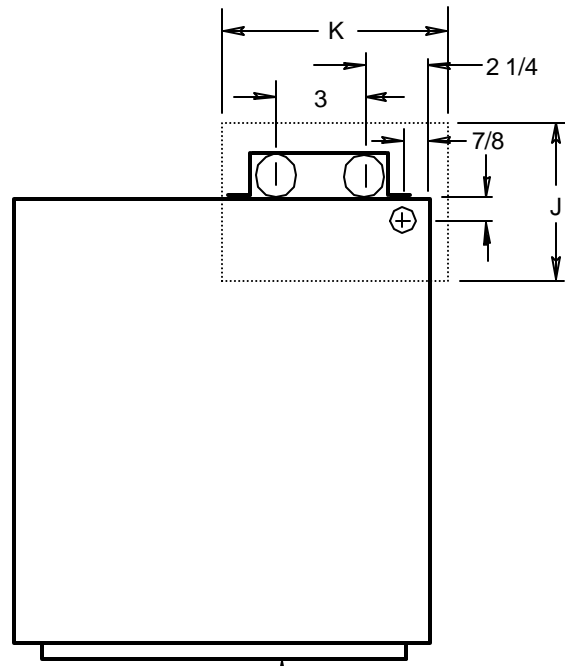


RETURN AIR
OPENING

L.H. SIDE RISERS
R.H. OPPOSITE
(STANDARD)



RETURN AIR
OPENING

R.H. REAR RISERS
L.H. OPPOSITE
(OPTIONAL)

Notes:

1. "Riser size" refers to the larger of the supply and return risers on each heat pump.
2. Risers are protected by a steel riser cover extending the height of the cabinet. Risers are soldered to a copper clamp to help prevent movement during shipment and jobsite handling.
3. Riser couplings are not furnished by Whalen, unless otherwise noted.
4. Sleeve hole dimensions "J" and "K" are recommended minimums.
5. Supply pipe is always towards the R.A. on side riser units and adjacent the drain on rear riser units.

RISER SIZE	J	K
3/4	6	8
1	6	8
1 1/4	6	8
1 1/2	6	8
2	8	10
2 1/2	8	10

All dimensions in inches.

WATER SOURCE HEAT PUMPS

THE WHALEN COMPANY
EASTON, MARYLAND

RISER DETAILS
SERIES VI VERTICAL UNITS

DRAWING NUMBER 609B