

FIGURE 1

OUTDOOR AIR
PLENUM

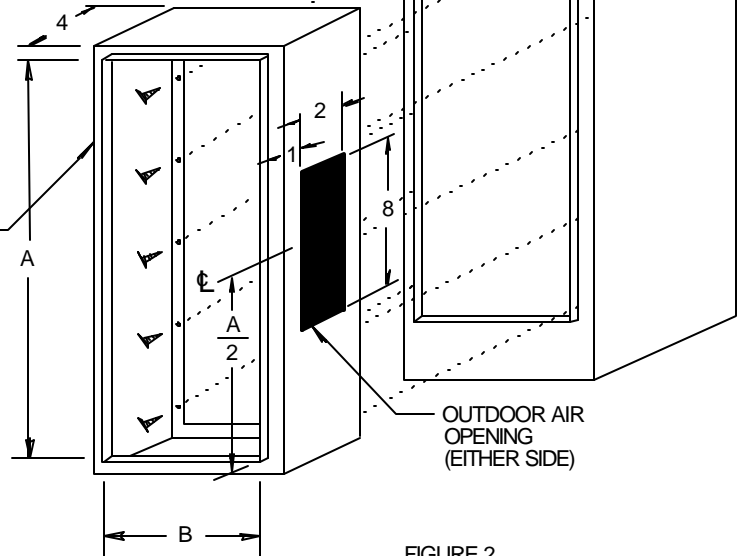


FIGURE 2

ASSEMBLY INSTRUCTIONS:

1. Assemble the four sections of the plenum, as shown in figure 1, with (12) #8 x 1/2" sheet metal screws.
2. Position the plenum on the unit with the outdoor air opening facing the desired side. Mark and drill the attachment holes in the unit with an 1/8" drill. Secure the plenum to the unit with (10) #8 x 1/2" sheet metal screws, as shown in figure 2.
3. The standard plenum has a manually positioned damper and is installed.
4. The outdoor air opening includes a 1/2" flange for attachment of field ducting.

RECOMMENDATION:

When installing or removing heat pump chassis through outdoor air plenum, bridge with 1/2" plywood or 18 ga. sheet metal between finished drywall and chassis rail to avoid damaging plenum.

UNIT NOMINAL CFM	A	B
200/300/400	36	14
600/800	38	16
1000/1200	52	18

All dimensions in inches.

WATER SOURCE HEAT PUMPS

THE WHALEN COMPANY
EASTON, MARYLAND

**SERIES VI VERTICAL UNITS
OUTDOOR AIR PLENUM KIT
WITH MANUAL DAMPER**

DRAWING NUMBER 602-OAP

DECEMBER 2000