

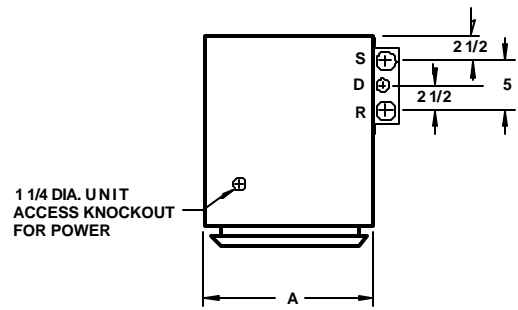
LEFT SIDE VIEW

FRONT VIEW

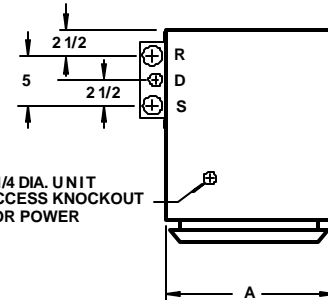
LEFT HAND MASTER

NOTES:

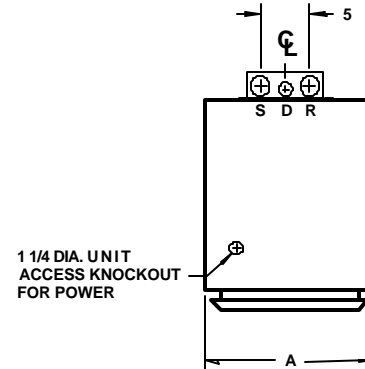
1. See drawing number 411 for supply grille or register options.
2. Cabinet is continuous galvanized steel, suitable for direct application of "drywall" plaster board.
3. Return air grille is clear anodized aluminum.
4. Supply, return and drain risers are type M copper, standard or type L, optional. Riser assemblies include two ball valves inside the cabinet.
5. Unless otherwise noted, the fan motor runs continuously on either high or low speed.
6. 48" thermostat height is standard on WF\* 300-400 units. Remote thermostat is required on WF\* 600 - 800 units for 48" thermostat height.



RIGHT SIDE RISERS  
(ELEVATED VIEWS NOT SHOWN)



LEFT SIDE RISERS  
(ELEVATED VIEWS SHOWN)



REAR RISERS  
(ELEVATED VIEWS NOT SHOWN)

PLAN VIEW

UNIT MODEL	NOMINAL CFM	A	B	F	H	G	K	M
WF*-300-##	300	16	16	14	32	34	48	22
WF*-400-##	400	16	16	14	36	38	48	26
WF*-600-##	600	18	16	14	40	41	52	29
WF*-800-##	800	18	16	14	44	45	56	33

\* C = 3 ROW  
D = 4 ROW  
## = 2P, ET, AT

All dimensions in inches.

HI-RISE VERTICAL FAN-COIL UNITS

THE WHALEN COMPANY  
EASTON, MARYLAND

FAN COIL UNITS-2PIPE  
AND OPTIONAL ELECTRIC HEAT  
3 OR 4 ROW COOLING COILS  
WITH INTERNAL DRAIN PAN - MASTER UNITS  
DRAWING NUMBER 422B-MS