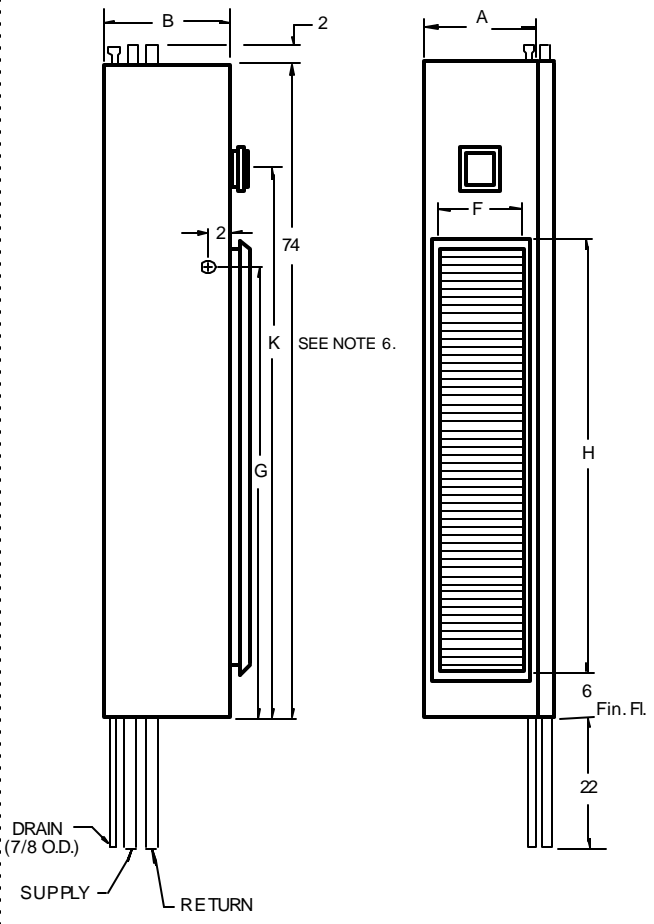


**LEFT SIDE VIEW  
REAR RISERS**

**FRONT VIEW  
REAR RISERS**



**LEFT SIDE VIEW  
SIDE RISERS  
R.H. SHOWN**

**FRONT VIEW  
SIDE RISERS  
R.H. SHOWN**

**NOTES:**

1. See drawing number 411 for top discharge dimensions . The return air grille is always on the front of the unit
2. Cabinet is continuous galvanized steel, suitable for direct application of "drywall" plaster board.
3. Return air grille is extruded aluminum.
4. Supply, return and drain risers are type M copper, standard or type L, optional. Riser assemblies include four ball valves inside the cabinet.
5. See drawing number 408 for detailed riser dimensions and plan views.
6. Remote thermostat is required on units for 48" thermostat height.

UNIT MODEL	NOMINAL CFM	A	B	F	H	G	K
WF*-1000##	1000	24	24	20	48	47	58
WF*-1200##	1200	24	24	20	56	55	66

\* C = 3 ROW  
 \* D = 4 ROW  
 ## = 2P, ET or AE

All dimensions in inches.

**VERTICAL FAN-COIL UNITS**

**THE WHALEN COMPANY**  
 EASTON, MARYLAND

**FAN COIL UNITS - 2 PIPE  
 AND OPTIONAL ELECTRIC HEAT  
 1000 AND 1200 CFM UNITS  
 3 OR 4 ROW COOLING COILS**

DRAWING NUMBER 401C-K

FEBRUARY 2002