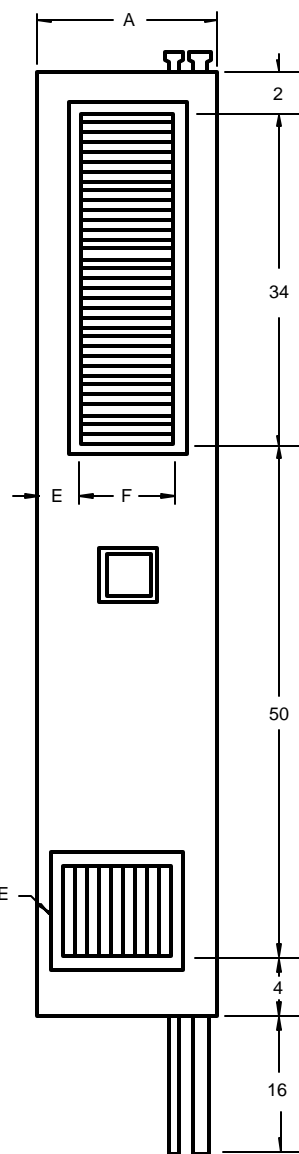
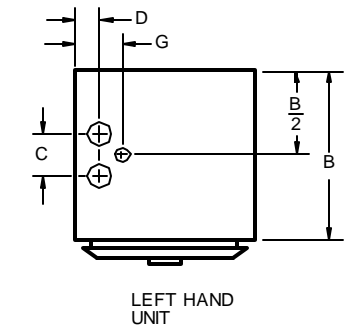


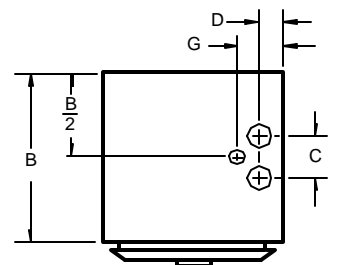
LEFT SIDE VIEW



FRONT VIEW



LEFT HAND UNIT



RIGHT HAND UNIT

PLAN VIEW

NOTES:

1. Supply grilles are offset from the unit centerline, away from the risers. Dimensions on request. The return air grille is always on the front of the unit.
2. Cabinet is continuous galvanized steel, suitable for direct application of "dry wall" plaster board.
3. Return air grille is clear anodized aluminum.
4. Supply, return and drain risers are copper.
5. Fan motor is 115 volt, 60 cycle, single phase.
6. This is a DOWNFLOW unit.

| MODEL | NOM-CFM | A | B | C | D | E | F | G | T | MINIMUM SLEEVE SIZE |
|-------|---------|----|----|-------|-------|---|----|-------|----|---------------------|
| 200 | 200 | 12 | 14 | 2 1/2 | 1 1/2 | 2 | 8 | 2 3/4 | 46 | 3 1/2 X 5 |
| 300 | 300 | 12 | 14 | 2 1/2 | 1 1/2 | 2 | 8 | 2 3/4 | 46 | 3 1/2 X 5 |
| 300X | 300 | 14 | 14 | 4 | 2 3/4 | 2 | 10 | 4 1/2 | 46 | 4 1/2 X 8 |
| 400 | 400 | 16 | 14 | 4 | 2 3/4 | 3 | 10 | 4 1/2 | 46 | 4 1/2 X 8 |
| 500 | 500 | 16 | 14 | 4 | 2 3/4 | 3 | 10 | 4 1/2 | 46 | 4 1/2 X 8 |
| 600 | 600 | 18 | 16 | 4 | 2 3/4 | 3 | 12 | 4 1/2 | 44 | 4 1/2 X 8 |
| 800 | 800 | 18 | 16 | 4 | 2 3/4 | 3 | 12 | 4 1/2 | 44 | 8 X 10 |

All dimensions in inches.

RISER HEAT-EXCHANGER VERTICAL FAN-COIL UNITS

THE WHALEN COMPANY
EASTON, MARYLAND

INVERTED 2-PIPE HEATING/COOLING
UNITS WITH FAN CYCLE CONTROL

DRAWING NUMBER 105A

AUGUST 1999