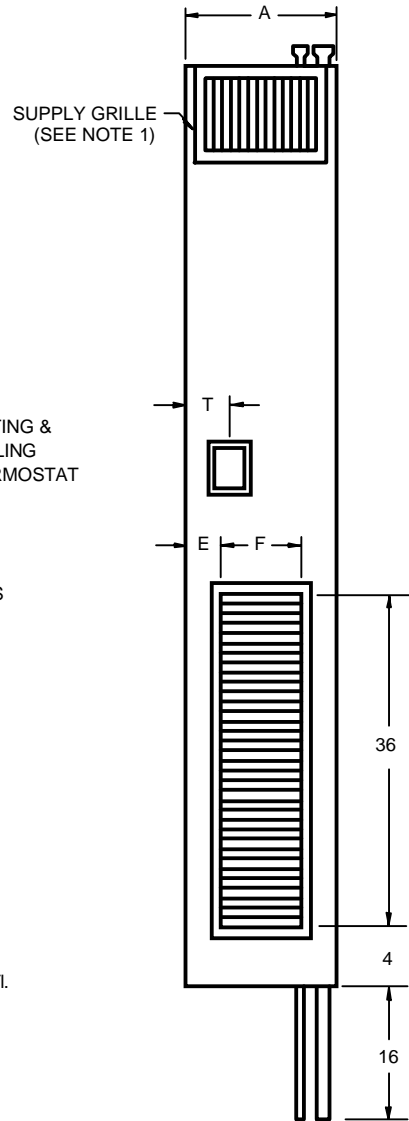
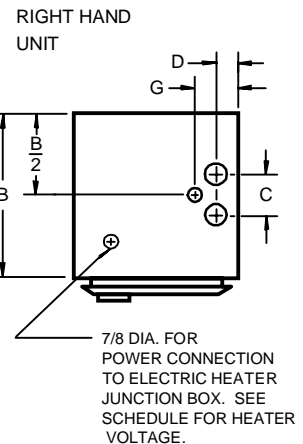
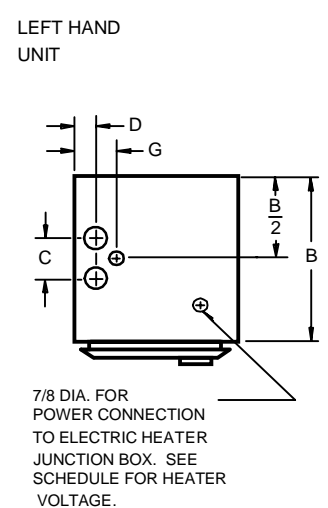


LEFT SIDE VIEW



FRONT VIEW



PLAN VIEW

NOTES:

1. See drawing number 111 for supply grille or register options. The return air grille is always on the front of the unit.
2. Cabinet is continuous galvanized steel, suitable for direct application of "drywall" plaster board.
3. Return air grille is extruded aluminum.
4. Supply, return and drain risers are copper.
5. Fan motor is 115 volt, 60 cycle, single phase.
6. Unless otherwise noted, the fan motor runs continuously on either high or low speed.
7. Sequence of operation may be for either total electric heat or for auxiliary electric heat.

MODEL	NOM-CFM	A	B	C	D	E	F	G	T	MINIMUM SLEEVE SIZE
W200E	200	12	14	2 1/2	1 1/2	2	8	2 3/4	3	3 1/2 X 5
W300E	300	12	14	2 1/2	1 1/2	2	8	2 3/4	3	3 1/2 X 5
W300XE	300	14	14	4	2 3/4	2	10	4 1/2	4	4 1/2 X 8
W400E	400	16	16	4	2 3/4	3	10	4 1/2	4	4 1/2 X 8
W500E	500	16	16	4	2 3/4	3	10	4 1/2	4	4 1/2 X 8
W600E	600	18	16	4	2 3/4	3	12	4 1/2	6	4 1/2 X 8
W800E	800	18	16	4	2 3/4	3	12	4 1/2	6	8 X 10

All dimensions in inches.

RISER HEAT-EXCHANGER VERTICAL FAN-COIL UNITS

**THE WHALEN COMPANY**  
EASTON, MARYLAND

2-PIPE UNITS WITH ELECTRIC HEAT,  
WITH FACE & BYPASS DAMPER CONTROL,  
AND WITH SEPARATE POWER SUPPLY FOR  
THE ELECTRIC HEATER

DRAWING NUMBER 103D

MARCH 1996