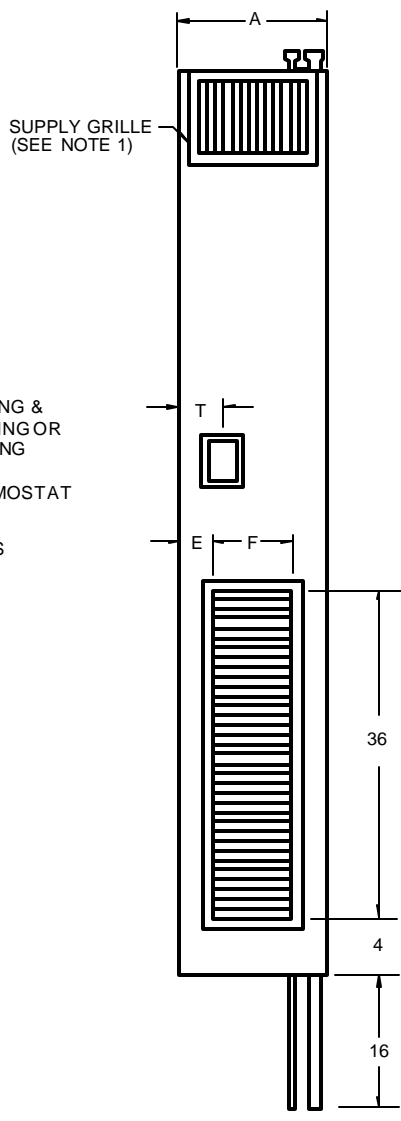
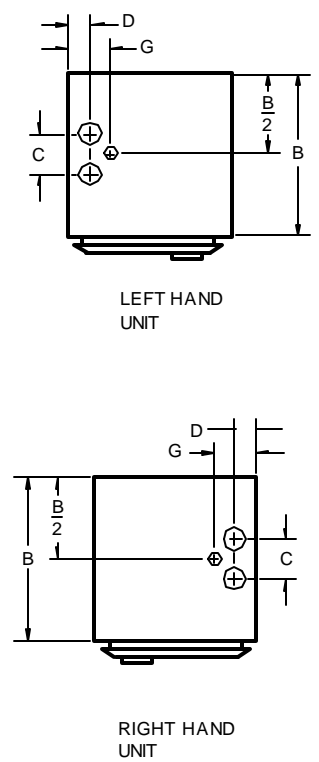


LEFT SIDE VIEW



FRONT VIEW



PLAN VIEW

NOTES:

1. See drawing number 111 for supply grille or register options. The return air grille is always on the front of the unit.
2. Cabinet is continuous galvanized steel, suitable for direct application of "drywall" plaster board.
3. Return air grille is extruded aluminum.
4. Supply, return and drain risers are copper.
5. Fan motor is 115 volt, 60 cycle, single phase.
6. Unless otherwise noted, the fan motor runs continuously on either high or low speed.

MODEL	NOM-CFM	A	B	C	D	E	F	G	P	T	MINIMUM SLEEVE SIZE
W202F	200	12	14	2 1/2	1 1/2	2	8	2 3/4	2 1/2	3	3 1/2 X 5
W302F	300	12	14	2 1/2	1 1/2	2	8	2 3/4	2 1/2	3	3 1/2 X 5
W302XF	300	14	14	4	2 3/4	2	10	4 1/2	3	4	4 1/2 X 8
W402F	400	16	16	4	2 3/4	3	10	4 1/2	3	4	4 1/2 X 8
W502F	500	16	16	4	2 3/4	3	10	4 1/2	3	4	4 1/2 X 8
W602F	600	18	16	4	2 3/4	3	12	4 1/2	3	6	4 1/2 X 8
W802F	800	18	16	4	2 3/4	3	12	4 1/2	3	6	8 X 10

All dimensions in inches.

<p>RISER HEAT-EXCHANGER VERTICAL FAN-COIL UNITS</p> <p>THE WHALEN COMPANY EASTON, MARYLAND</p>	<p>2-PIPE HEATING/COOLING UNITS OR 2-PIPE COOLING ONLY UNITS WITH FACE & BYPASS DAMPER CONTROL</p> <p>DRAWING NUMBER 102D</p>
--	---