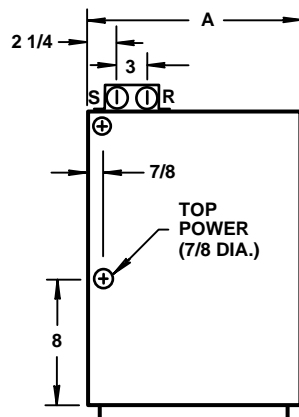
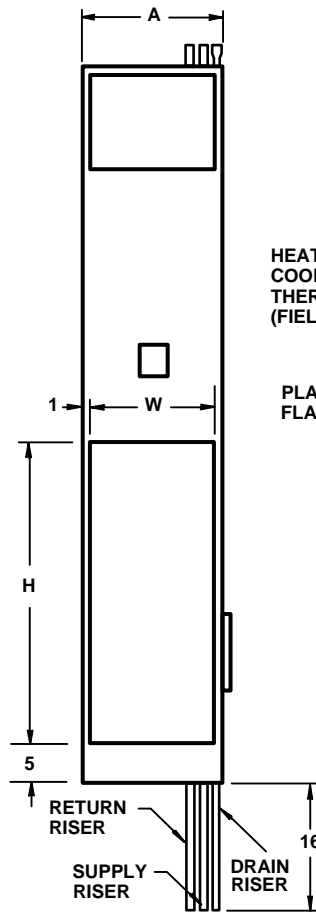


RIGHT HAND UNIT

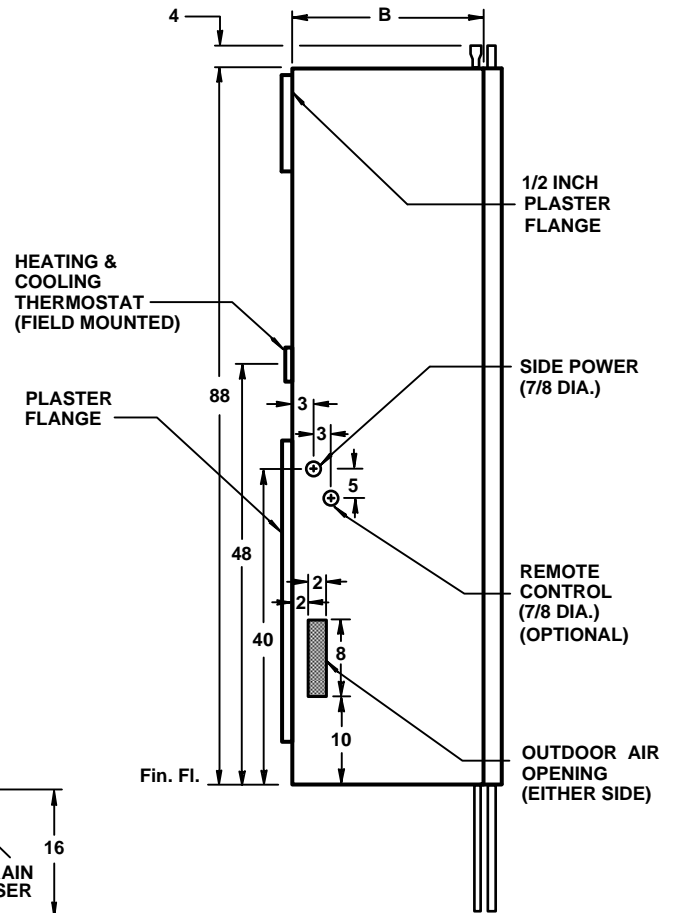


LEFT HAND UNIT

PLAN VIEW



FRONT VIEW



RIGHT SIDE VIEW

**Notes:**

1. The return air opening is always on the front of the unit.
2. Cabinet is acoustically and thermally insulated, and is fabricated of continuous galvanized steel, suitable for direct application of "drywall" plaster board.
3. Supply, return and drain risers are type M copper. Riser assemblies include two shut off valves inside the cabinet. Standard units include high-pressure hose kits for connection of the refrigeration chassis. The entire bottom of the unit is a drain pan, for containment of water within the unit.
4. Foam outdoor air filter, and manual damper are standard.

UNIT SIZE	A	B	W	H
VI 203 VI 303 VI 403	16	21	14	36
VI 603 VI 803	18	24	16	38

All dimensions in inches.

**WATER SOURCE HEAT PUMPS**

**THE WHALEN COMPANY**  
EASTON, MARYLAND

**SERIES VI VERTICAL UNITS**  
DEEP CABINET  
**WITH OUTDOOR AIR OPENING**  
REAR RISERS

DRAWING NUMBER 602G-R

November 2009