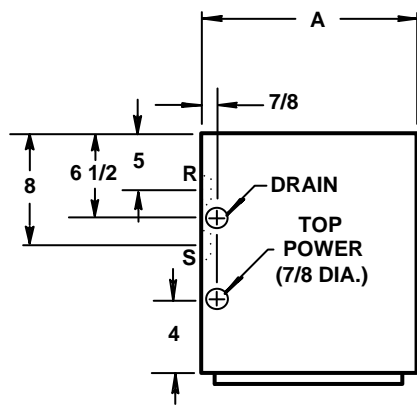
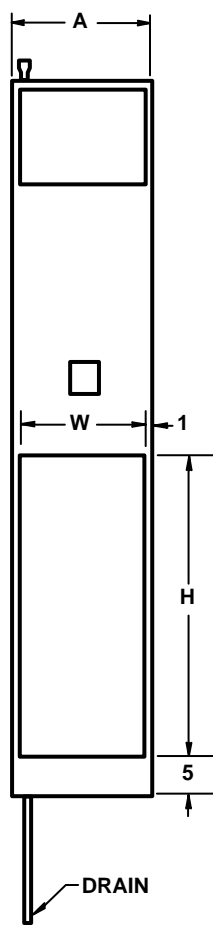


RIGHT HAND UNIT

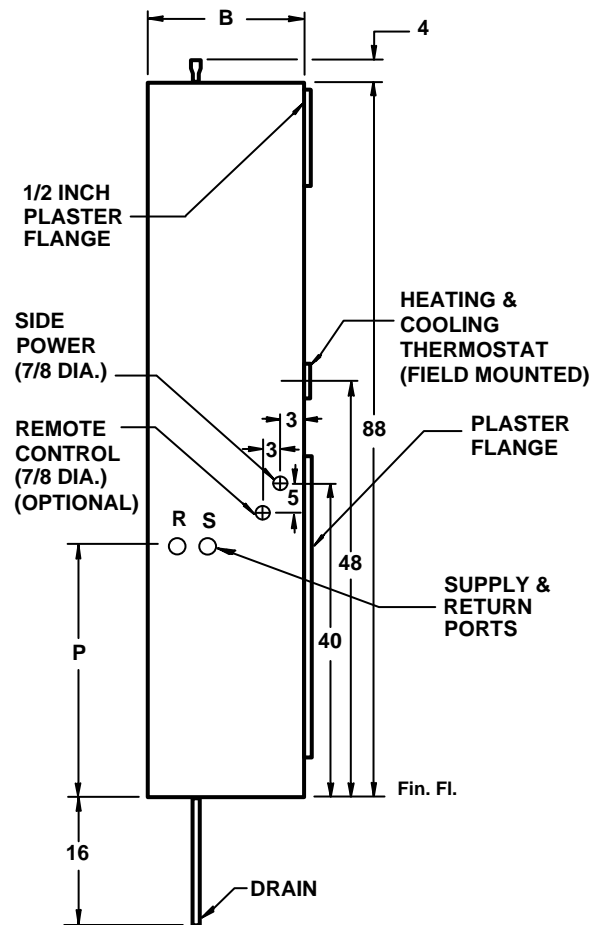


LEFT HAND UNIT

PLAN VIEW



FRONT VIEW



LEFT SIDE VIEW

Notes:

1. The return air opening is always on the front of the unit.
2. Cabinet is acoustically and thermally insulated, and is fabricated of continuous galvanized steel, suitable for direct application of "drywall" plaster board.
3. Supply and return risers are omitted from slave units. Hose kits and shutoff valves are shipped loose for field piping connection of refrigeration chassis to Master units. Condensate drain riser is type M copper. The entire bottom of the unit is a drain pan, for containment of water within the unit.

UNIT SIZE	A	B	W	H	P
VI 203 VI 303 VI 403	16	17	14	36	30
VI 603 VI 803	18	20	16	38	32

All dimensions in inches.

WATER SOURCE HEAT PUMPS

THE WHALEN COMPANY
EASTON, MARYLAND

SERIES VI VERTICAL UNITS

SLAVE - SIDE PIPING PORTS

DRAWING NUMBER 601G-SL