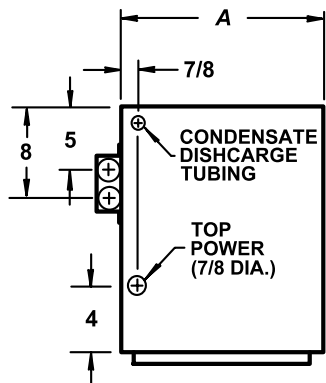
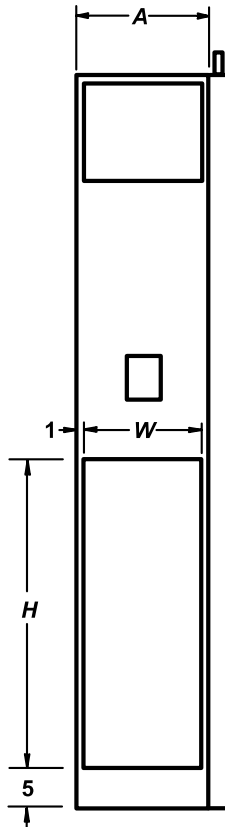


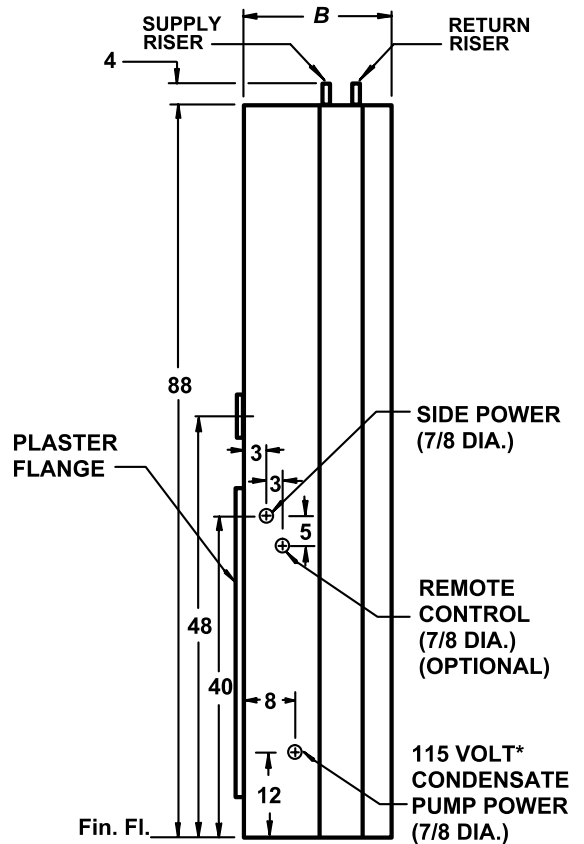
RIGHT HAND UNIT



LEFT HAND UNIT



FRONT VIEW



Fin. Fl.

*115/1/60 field power connection to condensate pump is required at the time main power connection is made. See Electrical Nameplate Data for heat pump nameplate voltage.

RIGHT SIDE VIEW

Notes:

1. The return air opening is always on the front of the unit.
2. Cabinet is acoustically and thermally insulated, and is fabricated of continuous galvanized steel, suitable for direct application of "drywall" plaster board.
3. Supply, and return risers are type M copper. Riser assemblies include two shut off valves inside the cabinet. Standard units include high-pressure hose kits for connection of the refrigeration chassis. The entire bottom of the unit is a drain pan, for containment of water within the unit.

UNIT SIZE	A	B	W	H
VI 202 VI 302 VI 402	16	17	14	36
VI 602 VI 802	18	20	16	38

All dimensions in inches.

WATER SOURCE HEAT PUMPS

THE WHALEN COMPANY
EASTON, MARYLAND

SERIES VI VERTICAL UNITS
WITH CONDENSATE PUMP

DRAWING NUMBER 601E-CP