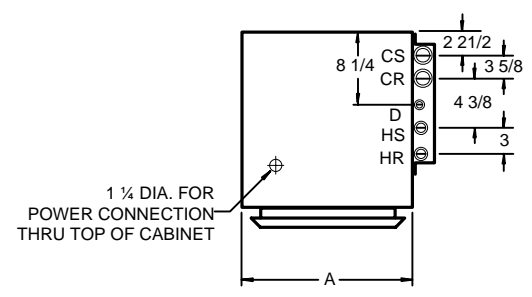


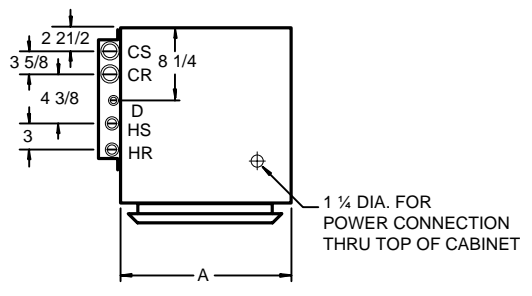
LEFT SIDE VIEW

FRONT VIEW

L.H. MASTER SHOWN



RIGHT SIDE RISER (ELEVATED VIEWS SHOWN)



LEFT SIDE RISER (ELEVATED VIEWS NOT SHOWN)

NOTES:

1. See drawing number 411 for supply grille or register options.
2. Cabinet is continuous galvanized steel, suitable for direct application of "drywall" plaster board.
3. Return air grille is clear anodized aluminum.
4. Supply, return and drain risers are type M copper, standard or type L, optional. Riser assemblies include two ball valves inside the cabinet.
5. Recommended sleeve hole size is 6" x 16".
6. 48" thermostat height is standard on WF* 300 units. Remote thermostat is required on WF*-400-800 for 48" thermostat height.

UNIT MODEL	NOMINAL CFM	A	B	F	H	G	K	M
WFC-300-4P	300	16	18	14	36	38	48	26
WFC-400-4P	400	16	18	14	40	42	52	29
WFC-600-4P	600	18	18	14	44	45	56	32
WFC-800-4P	800	18	18	14	48	49	60	36

All dimensions in inches.

HI-RISE VERTICAL FAN-COIL UNITS

THE WHALEN COMPANY
EASTON, MARYLAND

WFC 4-PIPE UNITS WITH VALVE CONTROL AND INTERNAL DRAIN PAN (MASTER UNIT SIDE RISER CONFIGURATION)

DRAWING NUMBER 429C-PT-MS

FEBRUARY 2008