

TYPE F
(FRONT)

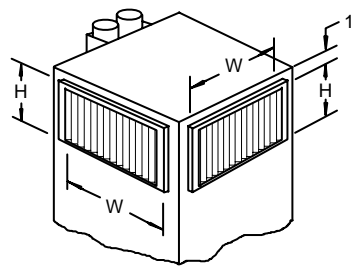
SINGLE DEFLECTION
DOUBLE DEFLECTION

TYPE F-B
(FRONT & BACK)

SINGLE DEFLECTION
DOUBLE DEFLECTION

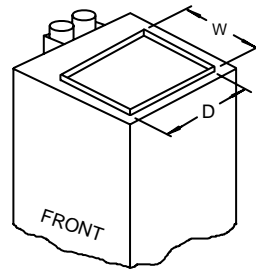
TYPE F-B-R
(FRONT, BACK & RIGHT)

SINGLE DEFLECTION
DOUBLE DEFLECTION



TYPE F-R
(FRONT & RIGHT)

SINGLE DEFLECTION
DOUBLE DEFLECTION



TYPE T
(TOP DUCTED)

CONSULT FACTORY FOR
DIMENSIONS NOT SHOWN

LH SIDE RISER UNITS SHOWN ABOVE
See Drawing No. 411PV for plan views.

Notes:

1. All standard Whalen supply grilles and registers are fabricated of clear anodized aluminum.
2. See unit schedule for discharge types. Optional supply registers are available with either parallel or opposed blade dampers at extra cost.
3. Supply and return air grilles are shipped loose, for installation after drywall installation is complete.
4. Listed grille and register dimensions are for the grille opening size. All grilles are centered.
5. Unless otherwise noted, the front grille blades will be vertical, as drawn.
6. Avoid combining ducted (Type T) discharge with unit mounted registers. This combination can increase the noise level at the unit.
7. Where Type T is combined with Type F, B, L or R, grille height will be that of a two-grille discharge.

UNIT SIZE	1 Grille Type (F,B,L,R)		2 Grille Type (F-B, F-L, F-R, L-R, B-L, B-R)		3 Grille Type (F-L-R, F-B-R, F-B-L)		Top Ducted Type (T)	
	W	H	W	H	W	H	W	D
1000	20	18	20	10	20	6	16	16
1200	20	20	20	10	20	6	16	16

All dimensions in inches.

HI-RISE VERTICAL FAN COIL UNITS

THE WHALEN COMPANY
EASTON, MARYLAND

SUPPLY GRILLE DISCHARGE OPTIONS
ISOMETRIC VIEW – 1000/1200 CFM UNITS

DRAWING NUMBER 411E-K

JUNE 2006