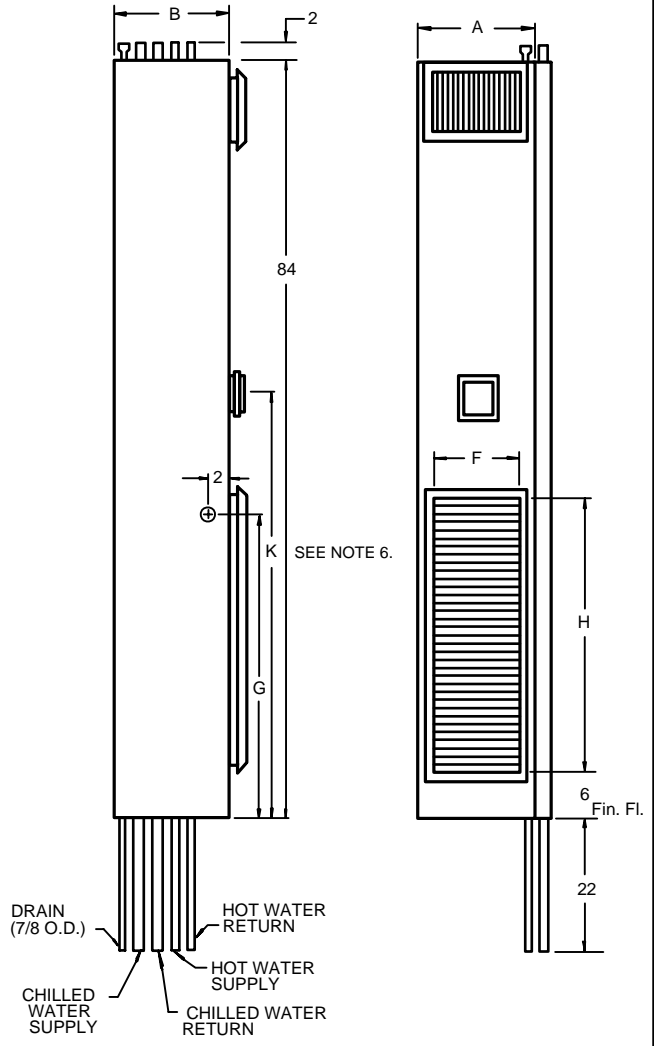


LEFT SIDE VIEW  
REAR RISERS

FRONT VIEW  
REAR RISERS



LEFT SIDE VIEW  
SIDE RISERS  
R.H. SHOWN

FRONT VIEW  
SIDE RISERS  
R.H. SHOWN

NOTES:

1. See drawing number 411 for supply grille or register options. The return air grille is always on the front of the unit.
2. Cabinet is continuous galvanized steel, suitable for direct application of "drywall" plaster board.
3. Return air grille is extruded aluminum.
4. Supply, return and drain risers are type M copper, standard or type L, optional. Riser assemblies include four ball valves inside the cabinet.
5. See drawing number 409 for detailed riser dimensions and plan views.
6. 48" thermostat height is standard on WF\* 300 - 400 units. Remote thermostat is required on WF\* 600 - 800 units for 48" thermostat height.

UNIT MODEL	NOMINAL CFM	A	B	F	H	G	K
WF*-300-4P	300	18	18	14	34	34	48
WF*-400-4P	400	18	18	14	38	38	48
WF*-600-4P	600	18	18	14	42	41	52
WF*-800-4P	800	18	18	14	46	45	56

All dimensions in inches.

\* C = 3 ROW  
\* D = 4 ROW

NOTE SPECIAL 18" CABINET WIDTH ON 300 & 400 CFM UNITS

VERTICAL FAN-COIL UNITS

**THE WHALEN COMPANY**

EASTON, MARYLAND

FAN COIL UNITS-4 PIPE  
3 OR 4 ROW COOLING COILS  
w/ ECM FAN MOTORS

DRAWING NUMBER 403B-ECM

MAY 2008