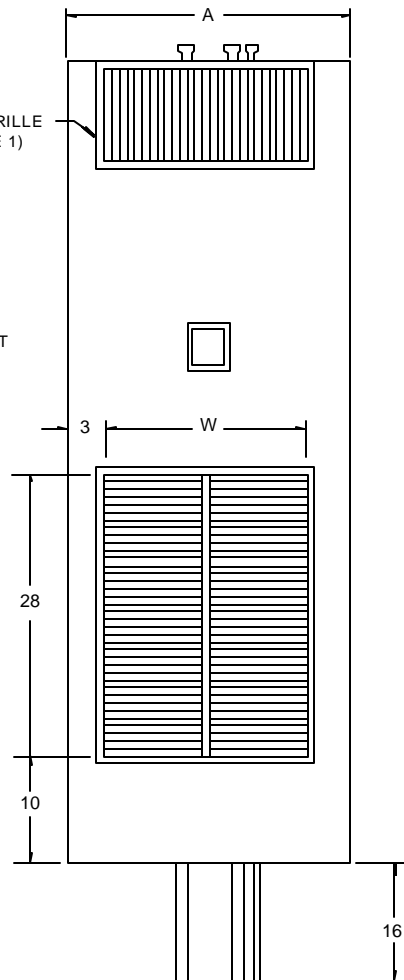
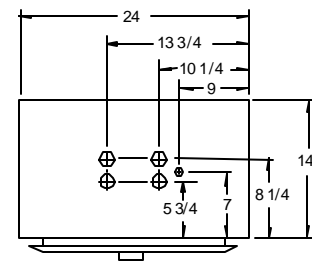


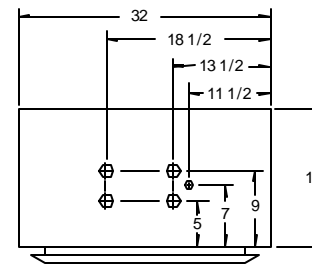
LEFT SIDE VIEW



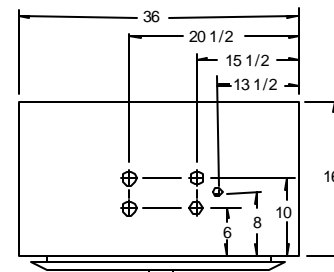
FRONT VIEW



300, 400, 500, & 600 CFM UNITS



800 & 1000 CFM UNITS



1200 & 1600 CFM UNITS

NOTES:

1. See drawing number 211 for supply grille or register options. The return air grille is always on the front of the unit.
2. Cabinet is continuous galvanized steel, suitable for direct application of "drywall" plaster board.
3. Return air grille is extruded aluminum.
4. Supply and return risers are copper.
5. Fan motors are 115 volt, 60 cycle, single phase.
6. There are no "hands" with standard unit configuration.

UNIT MODEL	NOM- CFM	A	B	W	P	D	MINIMUM SLEEVE SIZE
W3022	300	24	14	18	17 1/2	4	8x10
W4022	400	24	14	18	17 1/2	4	8x10
W5022	500	24	14	18	17 1/2	4	8x10
W6022	600	24	14	18	17 1/2	4	8x10
W8022	800	32	14	26	16 1/2	3 3/4	10x10
W10022	1000	32	14	26	16 1/2	3 3/4	10x10
W12022	1200	36	16	30	9 3/4	3 3/4	10x10
W16022	1600	36	16	30	9 3/4	3 3/4	10x10

All dimensions in inches.



RISER HEAT-EXCHANGER VERTICAL FAN-COIL UNITS

THE WHALEN COMPANY
EASTON, MARYLAND

50/50 4-PIPE
UNITS WITH FAN CYCLE CONTROL

DRAWING NUMBER 201D