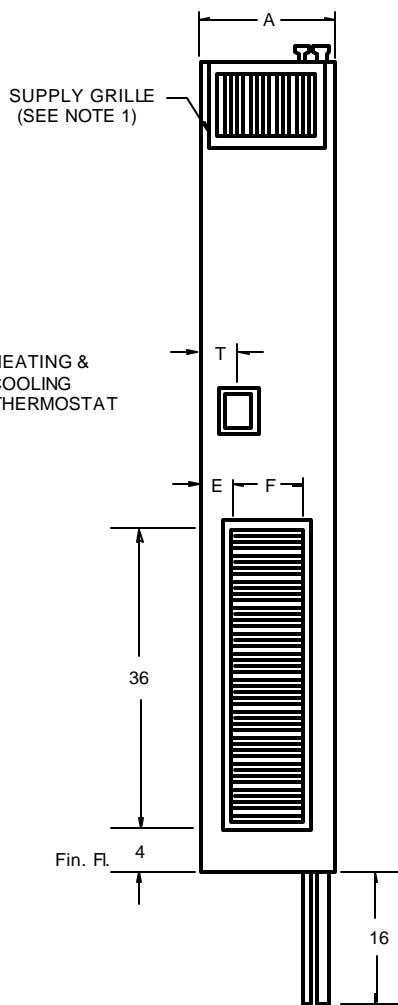
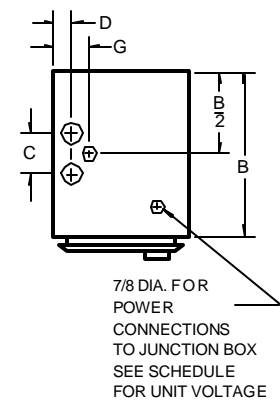


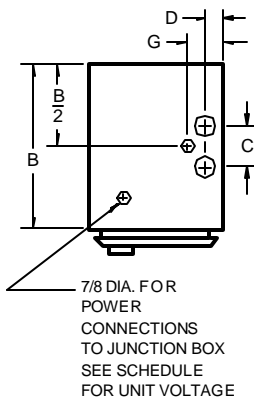
LEFT SIDE VIEW



FRONT VIEW



LEFT HAND UNIT



RIGHT HAND UNIT

PLAN VIEW

NOTES:

1. See drawing number 111 for supply grille or register options. The return air grille is always on the front of the unit.
2. Cabinet is continuous galvanized steel, suitable for direct application of "drywall" plaster board.
3. Return air grille is extruded aluminum.
4. Supply, return, and drain risers are copper.
5. Unless otherwise noted, the fan motor runs continuously on either high or low speed.
6. Sequence of operation may be for either total electric heat or for auxilliary electric heat.

UNIT MODEL	NOM-CFM	A	B	C	D	E	F	G	T	MINIMUM SLEEVE SIZE
W200E	200	12	14	2 1/2	1 1/2	2	8	2 3/4	3	3 1/2 X 5
W300E	300	12	14	2 1/2	1 1/2	2	8	2 3/4	3	3 1/2 X 5
W300XE	300	14	14	4	2 3/4	2	10	4 1/2	4	4 1/2 X 8
W400E	400	16	16	4	2 3/4	3	10	4 1/2	4	4 1/2 X 8
W500E	500	16	16	4	2 3/4	3	10	4 1/2	4	4 1/2 X 8
W600E	600	18	16	4	2 3/4	3	12	4 1/2	6	4 1/2 X 8
W800E	800	18	16	4	2 3/4	3	12	4 1/2	6	8 X 10

All dimensions in inches.

RISER HEAT-EXCHANGER VERTICAL FAN-COIL UNITS

THE WHALEN COMPANY  
EASTON, MARYLAND

2-PIPE UNITS WITH ELECTRIC HEAT, WITH FACE & BYPASS DAMPER CONTROL, AND WITH SINGLE POINT/ SINGLE VOLTAGE POWER SUPPLY

DRAWING NUMBER 104D

JUNE 2001