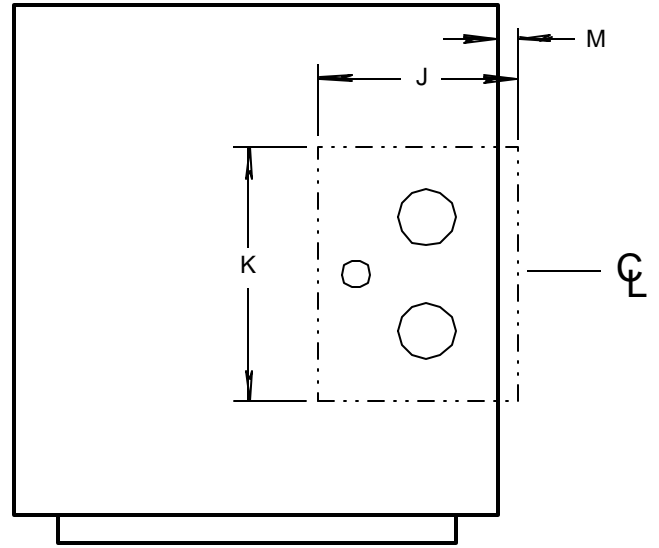


UNIT FRONT

R.H. UNIT SHOWN-L.H. OPPOSITE

200 & 300 CFM UNITS WITH 3/4" & 1" RISERS  
 300X, 400, 500, 600 & 800 CFM UNITS WITH 1 1/4" & 1 1/2" RISERS



UNIT FRONT

R.H. UNIT SHOWN-L.H. OPPOSITE

300X, 400, 500, 600 & 800 CFM UNITS WITH 2" RISERS

NOTES:

1. Sleeve hole dimensions "J" and "K" are recommended minimums.
2. "K" dimension is centered on unit.
3. Also see applicable unit drawing for unit details and dimensions not shown.

NOM. UNIT SIZE	RISER SIZE	J	K	M
200	3/4 1	3 1/2	5	3/8
300	3/4 1	3 1/2	5	3/8
300X	1 1/4 1 1/2	4 1/2	8	1 1/4
	2	8	10	3/4
400	1 1/4 1 1/2	4 1/2	8	1 1/4
	2	8	10	3/4
500	1 1/4 1 1/2	4 1/2	8	1 1/4
	2	8	10	3/4
600	1 1/4 1 1/2	4 1/2	8	1 1/4
	2	8	10	3/4
800	1 1/4 1 1/2	4 1/2	8	1 1/4
	2	8	10	3/4

RISER HEAT-EXCHANGER VERTICAL FAN-COIL UNITS

THE WHALEN COMPANY  
 EASTON, MARYLAND

ALL 2-PIPE UNITS  
 RECOMMENDED SLEEVE INSTALLATION

DRAWING NUMBER 101B-SH

JULY 2000