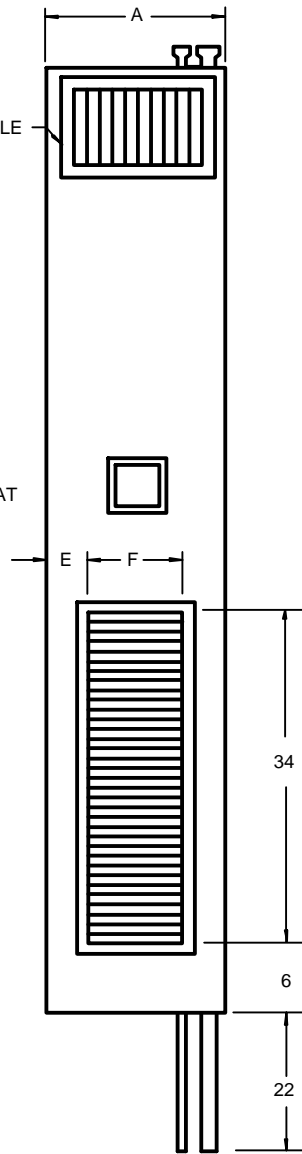
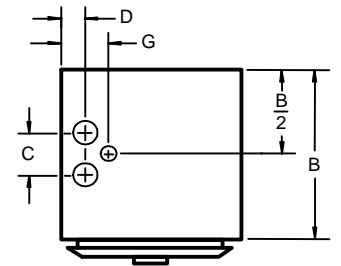


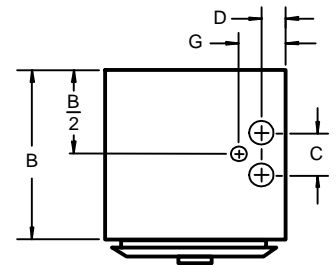
LEFT SIDE VIEW



FRONT VIEW



LEFT HAND UNIT



RIGHT HAND UNIT

PLAN VIEW

NOTES:

1. See drawing number 111 for supply grille or register options. The return air grille is always on the front of the unit.
2. Cabinet is continuous galvanized steel, suitable for direct application of "drywall" plaster board.
3. Return air grille is clear anodized aluminum.
4. Supply, return and drain risers are copper.
5. Fan motor is 115 volt, 60 cycle, single phase.
6. See drawing number 146 for optional outdoor air opening location.

MODEL	NOM-CFM	A	B	C	D	E	F	G	MINIMUM SLEEVE SIZE
W202	200	12	14	2 1/2	1 1/2	2	8	2 3/4	3 1/2 X 5
W302	300	12	14	2 1/2	1 1/2	2	8	2 3/4	3 1/2 X 5
W302X	300	14	14	4	2 3/4	2	10	4 1/2	4 1/2 X 8
W402	400	16	14	4	2 3/4	3	10	4 1/2	4 1/2 X 8
W502	500	16	14	4	2 3/4	3	10	4 1/2	4 1/2 X 8
W602	600	18	16	4	2 3/4	3	12	4 1/2	4 1/2 X 8
W802	800	18	16	4	2 3/4	3	12	4 1/2	8 X 10

All dimensions in inches.

RISER HEAT-EXCHANGER FAN-COIL UNITS

THE WHALEN COMPANY
EASTON, MARYLAND

2 PIPE HEATING/COOLING
UNITS WITH FAN CYCLE CONTROL

DRAWING NUMBER 101F-84